



## Welcome to this week's Keeping in Touch (KIT) for St Mary's and St Wilfrid's in the Parish of Chidham.



**25 Feb 24**

**No: 190**

### OUR SERVICE THIS WEEKEND

At our **1000** service in **St Mary's** this Sunday we will be welcoming **Reverend John Dane** to lead us.

*(There will also be a 0900 Eucharist service at Sennicotts)*

### LENTEN SOUP LUNCHES

The second of the Lent soup lunches is taking place in St Wilfrid's on **Thursday 29<sup>th</sup> February** from 1200 – 2.00pm.

These lunches are to raise funds for the Flower Festival taking place in St. Mary's in July.



### SPRING FAIR COMING SOON – Only **3 WEEKS TO GO!**

Our **Spring Fair** is on **16<sup>th</sup> March** and we are appealing for the usual wide selection of items. Spring cleaning and sorting out? Please consider keeping any unwanted items for us!

There will also be a **tombola** at the Fair, so if you are able to donate any grocery items; bottles of sauce, pop, water, shampoo, shower gel, beer, wine or perhaps chocolates, sweets and biscuits etc. we would be most grateful. Just one item will be a great help.

If you received any Christmas gifts that are seeking a home, or have unwanted items that others may need, we would be happy to help recycle them. Do you have any **costume jewellery, handbags, scarves** or other **accessories** that need rehoming? Small items of china and glass (no drinking glasses please) are always popular as well as unwanted **greetings cards, gift bags** and **notebooks**. Perhaps you have some **toiletries** or a **candle** or maybe **craft and sewing items** you are not using. We are always grateful to receive **jigsaws** too. **N.B.** We are not collecting books for this event, as we still have a good selection generously donated for the Book & Cake Sale.



All of the above will help us to keep our 2024 fundraising going! Most of all make a date to come along and support the Fair.

## ANNUAL PLANT SALE

Our very popular Plant Sale will take place on **11<sup>th</sup> May** in **St Wilfrid's**.

More details to come, but we will be appealing for garden related items to sell, so if you are having a clear out do keep any items for us that you may no longer need. These are always extremely popular; outdoor & indoor pots and trays, tools, ornaments, equipment, greenhouse items, gardening accessories, seed packets etc.



Finally, if any green fingered people out there are thinking about starting off their spring planting then please keep us in mind, and if you are making cuttings from house plants these would be welcomed too!

## DATES FOR YOUR DIARY

<b>29 Feb</b>	<b>Lenten Soup Lunch St Wilfrid's 1200- 1400</b>
<b>16 Mar</b>	Spring Fair St Wilfrid's 1030 - 1230
<b>24 Mar</b>	Palm Sunday Service 1000 St Mary's
<b>28 Mar</b>	Maundy Thursday Service 1030 St Wilfrid's
<b>29 Mar</b>	Good Friday Walk of Witness
<b>31 Mar</b>	Easter Sunday 0700 Dawn Service Cobnor Shore (0800 St Mary's if wet weather) 1000 Joint Service St Mary's, Funtington
<b>25 Apr</b>	Annual Parochial Church Meeting 7.30pm St Wilfrid's
<b>11 May</b>	Plant Sale St Wilfrid's 1030 - 1230
<b>12-14 Jul</b>	Flower Festival in St Mary's

## BOARD GAMES FOR FAMILIES AT CHICHESTER LIBRARY

**Saturday 24 February 09:00–16:00**

Did you know that you can drop in the library to play board games with other families every 2nd and 4th Saturday of the month, from 0900 - 1600?

You can contact [Chichester Library](http://Chichester Library) for more details.



## CATHEDRAL LIBRARY OPEN DAYS – Tuesday 5<sup>th</sup> March

**On the first Tuesday of each month** the Cathedral Library will be open to the public from **10.00am to 12.00pm**. You can find the entrance to the Library within the Cathedral Treasury and Shop, located in the North Transept. Knowledge of the Library is partial but a reasonable number of books can be traced back as far as the late 12th century. The Library also has some intriguing stained glass windows and unusually well-preserved stone corbels. If you would like to find out more please contact the Sub-Librarians at: [library@chichestercathedral.org.uk](mailto:library@chichestercathedral.org.uk) or on 01243 813587.

## WHEN IS A WHITE VIOLET NOT A WHITE VIOLET?

You will doubtless have seen the snowdrops peeping through in our churchyard. They are among the first flowers to raise their heads in the New Year. Universally considered as a harbinger of Spring, the moment they arrive we can start to think about warmer times to come and did you know that when it is warm they release a fragrance? Their scientific name, *Galanthus*, means milk flower. Snowdrops have been known since the earliest times under various names, but were finally named *Galanthus* in 1753. They were first described by the classical Greek author Theophrastus in the fourth century BC, who named them 'white violets'. Many other descriptions followed until 1583 when a Flemish botanist, Rembert Dodoens, described and illustrated them, renaming them *Leucojum bulbosum praecox* (Early bulbous violet). This name remained until Carl Linnaeus, a Swedish biologist and physician known as the 'father of modern taxonomy', named them as *Galanthus*. There are approximately 20 species of the genus *Galanthus*. Most species flower in winter, before the vernal equinox, and prefer partial shade especially around deciduous trees and shrubs, although *Galanthus reginae-olgae*, which flowers in autumn, prefers a sunny position! We have soldiers returning from the Crimean War battlefields to thank for the large scale introduction of snowdrops to UK gardens. In the midst of the bloody carnage of engagements such as Balaclava and Sevastopol, it's extraordinary to think that soldiers actually dug up snowdrops in the wild and brought them home with them!



In most countries collecting snowdrop bulbs from the wild is now illegal. Under CITES regulations, international trade in any quantity of *Galanthus*, whether bulbs, live plants, or even dead ones, is illegal without a CITES permit. CITES does allow a limited trade in wild-collected bulbs of only three species, from Turkey and Georgia. A number of species are on the IUCN Red List of threatened species, with their status being 'critically endangered'. Sadly, one of the five known sites of one endangered species, at Sochi, was destroyed by preparations for the 2014 Winter Olympics.

Several famous poets have written in celebration of Snowdrops, including Ted Hughes, Alfred Tennyson and Walter De La Mare. This poem by Wordsworth, is less well known than his homage to daffodils. 'To a Snowdrop' was published in 1819. The poem is written in a sonnet form and talks of a hardy little flower that blooms towards the end of winter and whose presence signals that spring is on its way. It suggests that the snowdrop is strong in the face of hardship but at the same time, its brief appearance reminds us that yet another year has passed, acknowledging that beauty and life are fleeting (*a bit sad really!*).

### **To a Snowdrop**     *William Wordsworth*

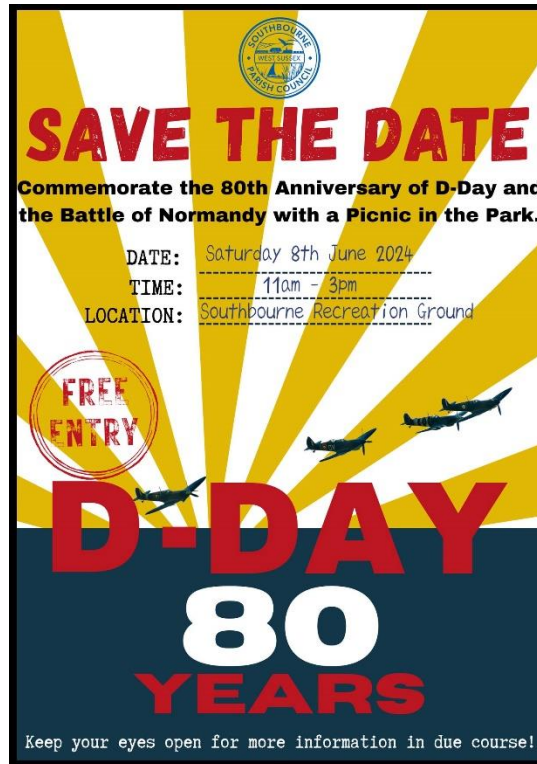
Lone Flower, hemmed in with snows and white as they  
But hardier far, once more I see thee bend  
Thy forehead, as if fearful to offend,  
Like an unbidden guest. Though day by day,  
Storms, sallying from the mountain-tops, waylay  
The rising sun, and on the plains descend;  
Yet art thou welcome, welcome as a friend  
Whose zeal outruns his promise! Blue-eyed May  
Shall soon behold this border thickly set  
With bright jonquils, their odours lavishing  
On the soft west-wind and his frolic peers;  
Nor will I then thy modest grace forget,  
Chaste Snowdrop, venturesome harbinger of Spring,  
And pensive monitor of fleeting years!



## SPOTLIGHT ON SNOWDROPS

Each year snowdrop gardens open in February/March as part of the National Garden Scheme's Snowdrop and Spring Flower openings. You might like to visit **The Old Vicarage** in the village of **Washington** just off the A24 near Worthing. You can read more about the garden [here](#).

*Did you know that a snowdrop collector is known as a galanthophile?*

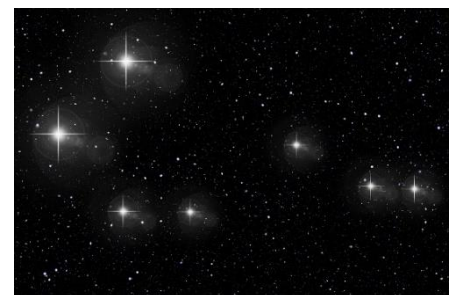


## ASTRONOMY NIGHT AT PAGHAM HARBOUR

**8<sup>th</sup> March 2024 7.30pm – 9.30pm**

Ever wondered which stars you are looking at or which constellation they make up? An evening at [Pagham Harbour](#) in the company of the South Downs Astronomical Society, learning to recognise our winter constellations, understand the Cosmos and how we fit in and viewing deep space objects through quality telescopes.

£12 per person / £9.50 RSPB members. More information is available from 01243 641508 or email [pagham.harbour@rspb.org.uk](mailto:pagham.harbour@rspb.org.uk)



I gave up chocolate  
for lent.



I gave up lent  
for chocolate.



## CHICHESTER SINGERS

**Saturday 23<sup>rd</sup> March 7.30pm**

**Chichester Cathedral**

**Haydn, Bernstein & Jonathan Willcocks**

**Programme:**

Haydn – Te Deum

Bernstein – Chichester Psalms

Finzi – Dies Natalis

Jonathan Willcocks – A Great and Glorious Victory



Tickets now available. [www.ticketsource.co.uk/the-chichester-singers](http://www.ticketsource.co.uk/the-chichester-singers)

## WSSC £2 BILLION BUDGET AGREED FOR 2024/25

West Sussex County Council will invest £2bn to support residents, communities and businesses over the coming year, including an extra £81.9m of funding for vital day-to-day services.



The council's budget for 2024/25 was agreed at a meeting of Full Council on 16<sup>th</sup> February, when councillors also approved the [Council Plan](#), which sets out its priorities. At the meeting, members across all political parties debated measures that were then agreed to balance the budget for the year ahead. These include efficiency savings of £15.7m, an increase in core council tax of 2.99%, and an additional adult social care precept of 2%.

During 2024/25 the council also plans to spend £131.6m of its £695m five-year Capital Programme. The main areas of investment being highways, schools and the environment.

[Read full update](#)

## HAVE YOUR SAY

There are lots of ways you can let WSSC know your opinions and views on county council plans, initiatives and services. By joining the People's Panel, you can view and take part in current consultations and surveys, or give comments and suggestions about how WSSC can improve its services.

[All the ways to have your say](#)

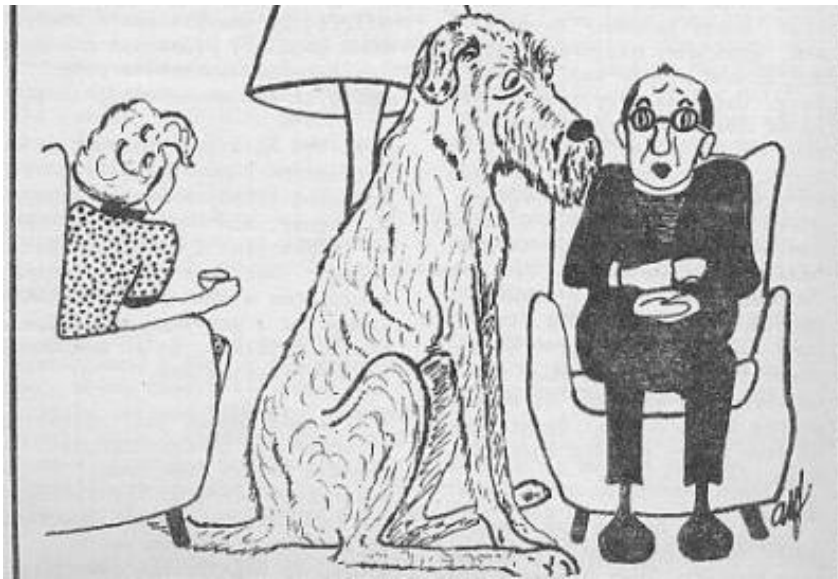
## WAYS TO SUPPORT YOUR PARISH

If you feel able to help on a regular basis you can do this by joining our confidential **Planned Giving scheme**. If you are interested in helping in this way you can use the QR code to find out more or do speak to Carole Holmes our Gift Aid secretary.



Alternatively you may prefer to set up a **Standing Order** with your bank. Information is available in St Mary's. If you are able to **Gift Aid** your donations, if you have not already done so, please complete the gift aid declaration form which can be found in St Mary's, or speak to Carole Holmes. You can also make a donation through **online banking**, please use the reference 'donation': Acct name: PCC of Chidham Acct Number: 96179236 Sort Code: 60-05-24

Do contact one of our churchwardens or our treasurer [vivien519@btinternet.com](mailto:vivien519@btinternet.com) if you have any questions.



"Oh, take no notice vicar, it's not really his chair"

**Here is a reminder of the contact details for our churchwardens:**

**Mike Carroll – 01243 572646**  
**Willem Van Niekerk - 07960 305427**